

PRECISION INDEXING SOLUTIONS

Table of Contents

INDEXERS

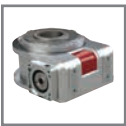
Servo Positioners



GTB Series
Globoidal (Roller Gear)
Servo Positioner.....IN-SRV-1



PGM Series
Parallel Gear Servo Positioner...IN-SRV-19



RSD Series
Rotary Servo Drives.....IN-SRV-25

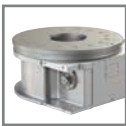
Mechanical Indexers



RDM Series
Rotary Index Drive IN-MCH-1



RD Series
Roller Dial Index Drive..... IN-MCH-42



E Series
Heavy-Duty Index Drive IN-MCH-54



RA Series
Right Angle Index Drive IN-MCH-66



RGD/RGS Series
Roller Gear Index Drive IN-MCH-76



P Series
Parallel Shaft/Flange Drive.... IN-MCH-96



RNG Series
Ring Drive Dial Indexer.. IN-MCH-108

OVERLOAD CLUTCHES



Overload Clutches
Output Overload..... IN-CLU-1

CUSTOM CAMS



Custom Cams
Cam Design Solutions IN-CAM-1

CONVEYORS



Rite-Link Series
Thin-Profile..... IN-CNV-1



Precision Link Series
Table-Top IN-CNV-4



Precision Link Series
Heavy-Duty IN-CNV-16

PARTS HANDLERS



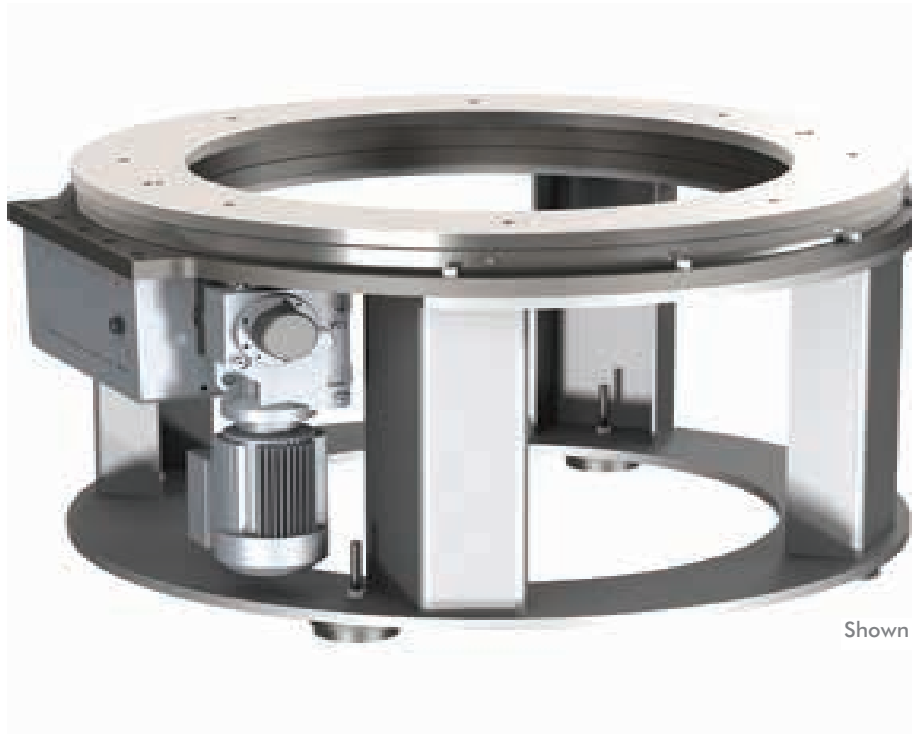
LPP Series
Linear Part Handlers IN-PRT-2



RPP Series
Rotary Part Handlers IN-PRT-8

RING DRIVE DIAL INDEXER

Features | How To Order



Shown with optional base

Work from Within

The **CAMCO Ring Drive** offers easy-to-integrate automation that fits easily into your operations.

Minimize machine footprint: Mount your equipment inside the through-hole of the CAMCO Ring Drive.

Easily tool the ring drive: Attach fixtures directly to the dial ring, eliminating the need for an additional dial plate.

Best technical support and service: Worldwide access to our global network.

Applications

Printing and decorating machines

Rotary automatic assembly machines

Ideal for assembly systems requiring a large number of tooling stations

The Ring Drive can replace a small conveyor

Table of Contents

How to Order	109
750RNG	111
1100RNG	113
1550RNG	115

Licensed under U.S. Patent No. 5,950,503

RNG SERIES

Ring Drive Dial Indexer | Features and Benefits | How to Order

Base Model

750RNG

1100RNG

1550RNG

Description

w/ KH37 reducer & 1 HP AC motor (220/440V)

w/ KH37 reducer & 1 HP AC motor (220/440V)

w/ KH37 reducer & 1-1/2 HP AC motor (220/440V)

Control

1

2

3

4

5

Description

1 HP 120V 750RNG & 1100RNG only

1 HP 240V 750RNG & 1100RNG only

1 HP 440V 750RNG & 1100RNG only

2 HP 240V 1550RNG only

2 HP 440V 1550RNG only

Motion

Stops

Index

A

6

330

B

8

330

C

12

330

D

16

330

Index Mounting

(See Figure 1)

1

Reducer Ratio

750RNG

1100RNG

1550RNG

A

15.31

29.96

39.61

B

20.91

37.97

49.95

C

24.99

49.79

63.30

D

29.96

58.60

69.84

E

37.97

67.80

75.20

F

49.79

72.54

85.12

G

58.60

83.69

90.86

Reducer Mounting

(See Figure 3)

A

B

Signal Switch

M

P

Example: MS or PS

Note about signal switch options:

a) Mechanical is a single switch with cam.

b) Proximity option is a mounting bracket for 8 or 12 mm proximity switch. A proximity switch will not be supplied. Cam supplied as target.

Signal Switch Side

(See Figure 2)

S

Shaft

Other Motions (stops and index periods) available. Contact your DESTACO sales representative for more information.

Ring Drive Features

Great Design Flexibility

Available in three sizes (Ø): .75 m [29.53 in], 1.1 m [43.31 in] and 1.6 m [62.99 in]

Complete motorized drive package with reducer and AC inverter drive to suit most applications

Dial Ring can be removed for machining to mounting your tooling and fixtures.

Large center through-hole to accommodate auxiliary equipment

60 station capability, ideal for multiple part automatic assembly machines

Steel Dial Ring or optional Aluminum Ring

Broad range of motions/drive packages

Robust And Reliable

Superior accuracy, similar to a precision link conveyor - your work station is located over the cam for maximum accuracy.

High precision, hardened cams available in standard and special motions

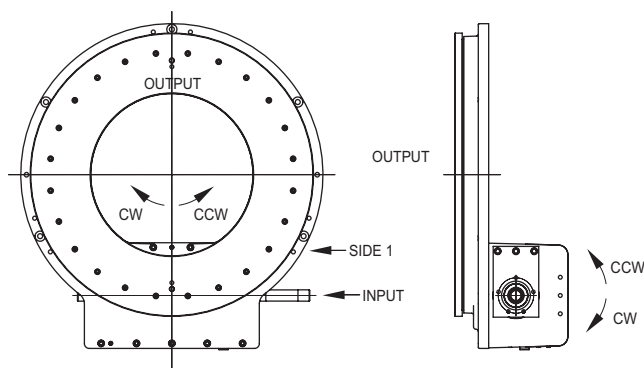
Sealed 4-point contact output bearing and large cam followers for superior accuracy and load capability (models 750RNG, 1100RNG and 1550RNG)

Modular shaft-mounted reducers for application flexibility and easy maintenance

Access to cam followers for easy inspection and replacement

Tapered roller bearings on camshaft

Input Shaft Configuration/Rotations (Figure 1)



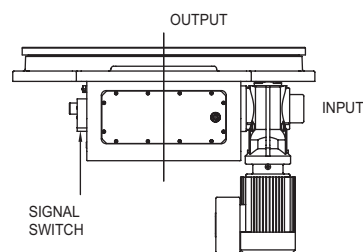
Right Hand Cam Standard:

CW Input Side 1, CCW Output

CCW Input Side 1, CW Output

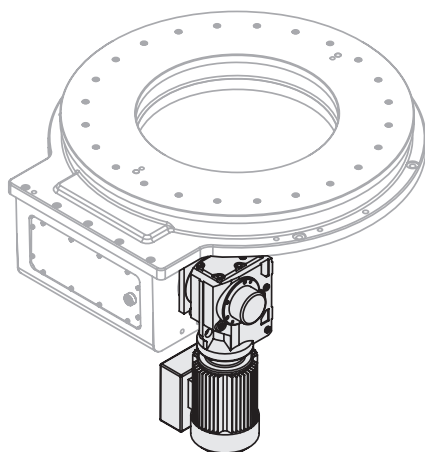
NOTE: Input can be driven in either direction

Signal Switch Mounting Position (Figure 2)

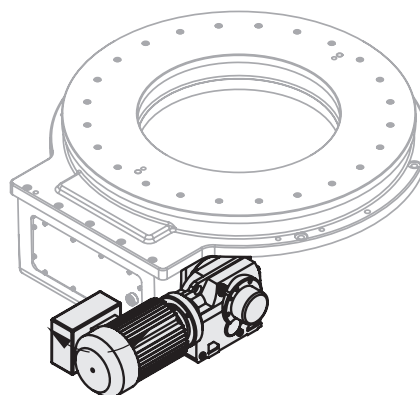


Gear Reducer Mounting Positions (Figure 3)

MOUNTING "A"

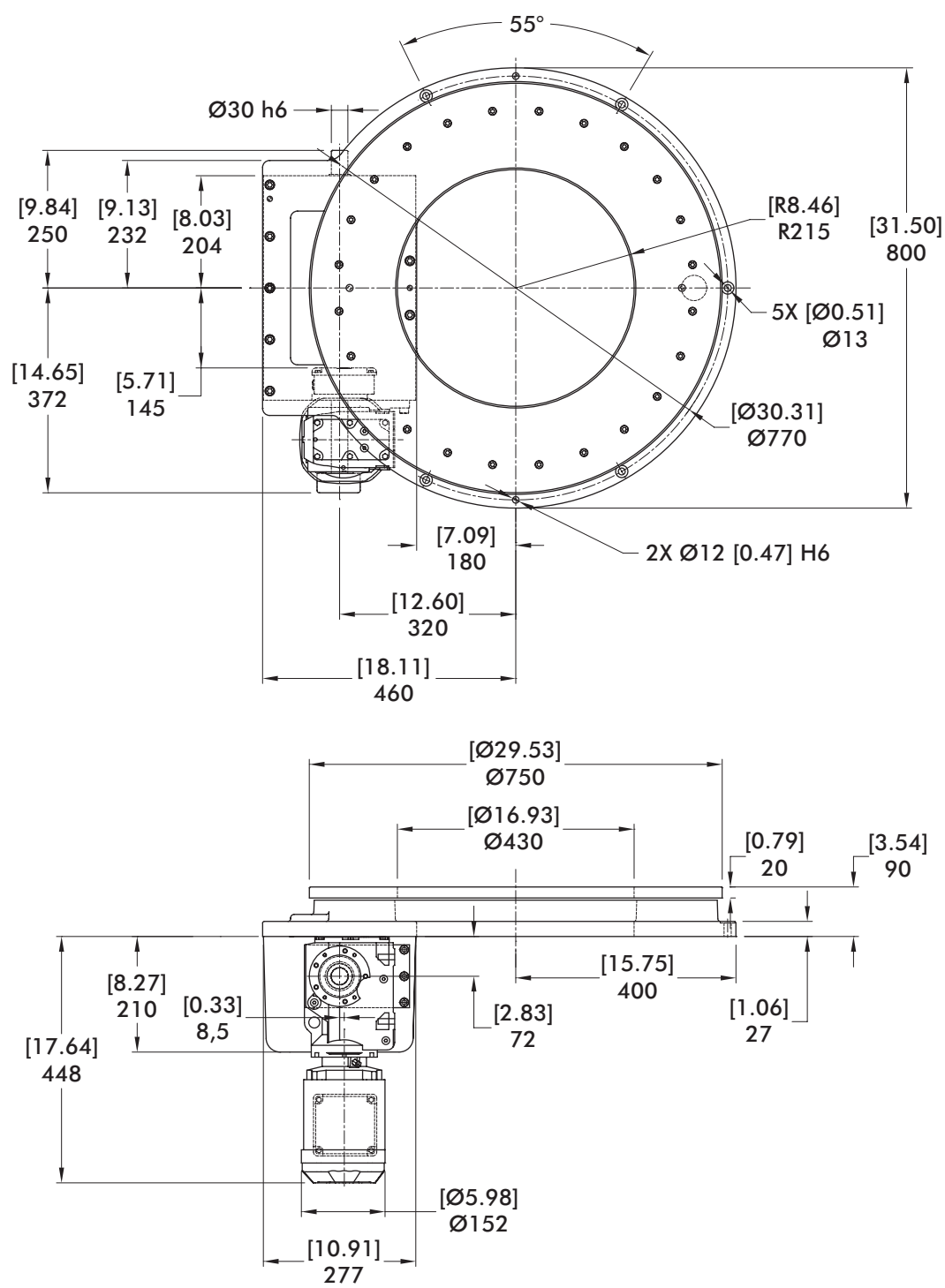


MOUNTING "B"

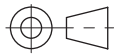


750RNG SERIES

Ring Drive Dial Indexer | Dimensions



mm [INCH]



THIRD ANGLE
PROJECTION

Maximum Inertia x 1000 kg-cm ² [lb-in ²] for standard package							
Stops	Motion Time [seconds]						
	0.468	0.617	0.764	0.915	1.160	1.521	1.791
6	0 [0]	50 [17]	170 [58]	363 [124]	855 [292]	1653 [565]	2315 [791]
8	9 [3]	138 [47]	354 [121]	696 [238]	1571 [537]	2991 [1022]	4167 [1424]
12	105 [36]	392 [134]	878 [300]	1650 [564]	3620 [1237]	6813 [2328]	9461 [3233]
16	237 [81]	746 [255]	1610 [550]	2982 [1019]	6488 [2217]	12162 [4156]	16871 [5765]
Reducer Ratio							
	15.31	20.19	24.99	29.96	37.97	49.79	58.60

Features

- KH37 Reducer (Ratios from 15.31:1 to 58.6:1)
- 1 HP AC Drive Package with Inverter Duty Motor and IM-pAC AC Drive (up to 60 cpm)
- Double Extended Camshaft (Input Shaft)
- Center Thru Hole (Ø230 mm [Ø9.05 in])
- Cycle Cam and Limit Switch Mounted to Camshaft
- Right Hand Cam

Output Bearing Capacity (loads carried during index):

Radial	25740 N [5580 lbs]
Axial	64020 N [14550 lbs]
Moment	6915 N-m [61200 in-lbs]

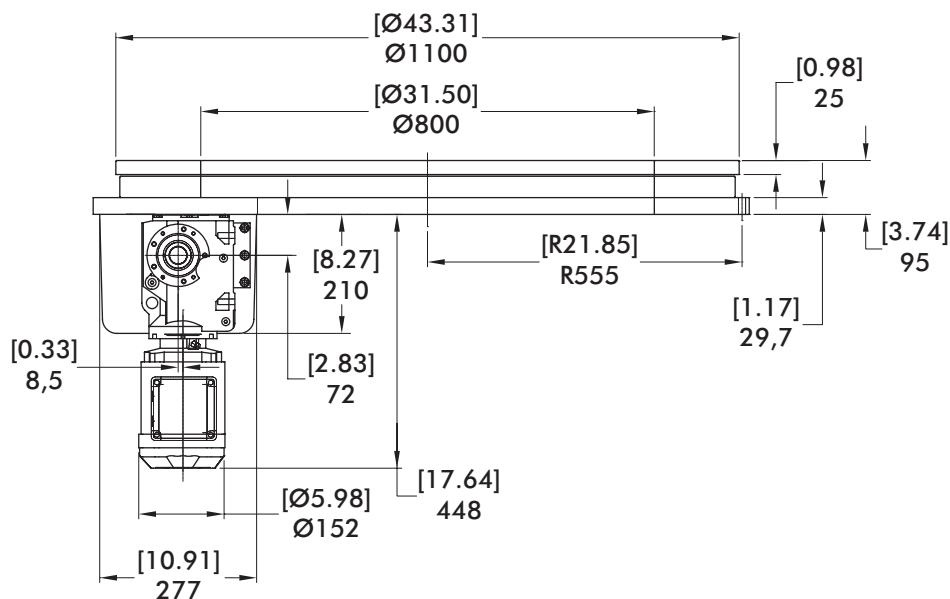
Accuracy ±60 arcsec / ±0,047 mm [±.0019 in] at 324 mm [12.75 in] Radius

Repeatability ±15 arcsec / ±0,012 mm [±.0005 in] at 324 mm [12.75 in] Radius

Optional Accessories

- KH47 Reducer
- 2 HP AC Drive Package with Inverter Duty Motor and Commander SK AC Drive (up to 60 cpm)
- Dual Cam and Limit Switch
- Left Hand Cam
- AC brake Motor
- Aluminum dial ring
- Servo motor drive package with precision planetary reducer for applications requiring flexibility or fewer than 6 stations
- Custom dials & tooling plates
- Machined base (see pg. IN-MCH-84)

Ring Drive Dial Indexer | Dimensions



THIRD ANGLE PROJECTION

Maximum Inertia x 1000 kg-cm ² [lb-in ²] for standard package							
Stops	Motion Time [seconds]						
	0.915	1.359	1.521	1.791	2.072	2.217	2.557
6	164 [56]	1106 [378]	1454 [497]	2119 [724]	2923 [999]	3386 [1157]	4594 [1570]
8	497 [170]	2174 [743]	2792 [954]	3971 [1357]	5405 [1847]	6224 [2127]	8372 [2861]
12	1451 [496]	5221 [1784]	6614 [2260]	9262 [3165]	12490 [4268]	14336 [4899]	19168 [6550]
16	2783 [951]	9484 [3241]	11963 [4088]	16672 [5697]	22407 [7657]	25688 [8778]	34280 [11714]
Reducer Ratio							
	29.96	37.97	49.79	58.60	67.80	72.54	83.69

Features

- KH37 Reducer (Ratios from 29.96:1 to 83.69:1)
- 1 HP AC Drive Package with Inverter Duty Motor and IM-pAC AC Drive (up to 60 cpm)
- Double Extended Camshaft (Input Shaft)
- Center Thru Hole (Ø800 mm [Ø31.50 in])
- Cycle Cam and Limit Switch Mounted to Camshaft
- Right Hand Cam

Output Bearing Capacity (loads carried during index):

Radial	159940 N [36350 lbs]
Axial	72829 N [16552 lbs]
Moment	16879 N-m [149376 in-lbs]

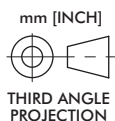
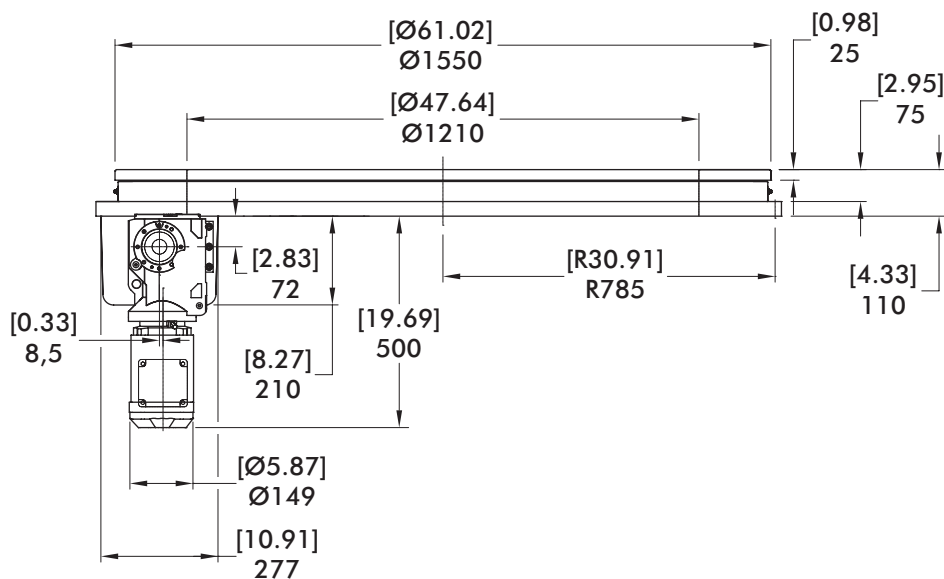
Accuracy ±35 arcsec / ±0,038 mm [±.0015 in] at 448 mm [17.65 in] Radius

Repeatability ±9 arcsec / ±0,010 mm [±.0004 in] at 448 mm [17.65 in] Radius

Optional Accessories

- KH47 Reducer
- 2 HP AC Drive Package with Inverter Duty Motor and Commander SK AC Drive (up to 60 cpm)
- Dual Cam and Limit Switch
- Left Hand Cam
- AC brake Motor
- Aluminum dial ring
- Servo motor drive package with precision planetary reducer for applications requiring flexibility or fewer than 6 stations
- Custom dials & tooling plates
- Machined base (see pg. IN-MCH-84)

Ring Drive Dial Indexer | Dimensions



Maximum Inertia x 1000 kg-cm ² [lb-in ²] for standard package							
Stops	Motion Time [seconds]						
	1.210	1.496	1.934	2.134	2.298	2.601	2.776
6	679 [232]	2242 [766]	5063 [1730]	6380 [2180]	7556 [2582]	9964 [3405]	11495 [3928]
8	1984 [678]	4764 [1628]	9780 [3342]	12121 [4142]	14214 [4857]	18495 [6320]	21211 [7248]
12	5718 [1954]	11972 [4091]	23253 [7946]	28527 [9748]	33232 [11356]	42863 [14647]	48979 [16737]
16	10954 [3743]	22071 [7542]	42125 [14395]	51499 [17598]	59868 [20458]	76985 [26307]	87859 [30023]
Reducer Ratio							
	39.61	48.95	63.30	69.84	75.20	85.12	90.86

Features

- KH47 Reducer (Ratios from 39.61:1 to 90.866:1)
- 2 HP AC Drive Package with Inverter Duty Motor and IM-pAC AC Drive (up to 60 cpm)
- Double Extended Camshaft (Input Shaft)
- Center Thru Hole (Ø1210 mm [Ø47.64 in])
- Cycle Cam and Limit Switch Mounted to Camshaft
- Right Hand Cam

Output Bearing Capacity (loads carried during index):

Radial	239052 N [54330 lbs]
Axial	76635 N [17417 lbs]
Moment	25720 N-m [227622 in-lbs]

Accuracy ±25 arcsec / ±0,039 mm [±.0015 in] at 648 mm [25.51 in] Radius

Repeatability ±6 arcsec / ±0,010 mm [±.0004 in] at 648 mm [25.51 in] Radius

Optional Accessories

- Dual Cam and Limit Switch
- Left Hand Cam
- AC brake Motor
- Aluminum dial ring
- Servo motor drive package with precision planetary reducer for applications requiring flexibility or fewer than 6 stations
- Custom dials & tooling plates
- Machined base (see pg. IN-MCH-84)