

DESTACKER DOUBLE BLANK DETECTOR SPRING MOUNTS

Vacuum Products | Features and Options | Ordering Information

DBD Series

Features:

- Orbital design allows compliance to blanks within +/- 15° without having to make any automation, tooling or robot adjustments.
- Elimination of compression springs results in long-lasting, reliable performance
- **HD** Version provides added stability for heavy-duty applications

Specifications:

Operating Pressure: 4 bar [60psi]
Electric: Sensor supplied by customer

Note: To be used in vertical orientations only.

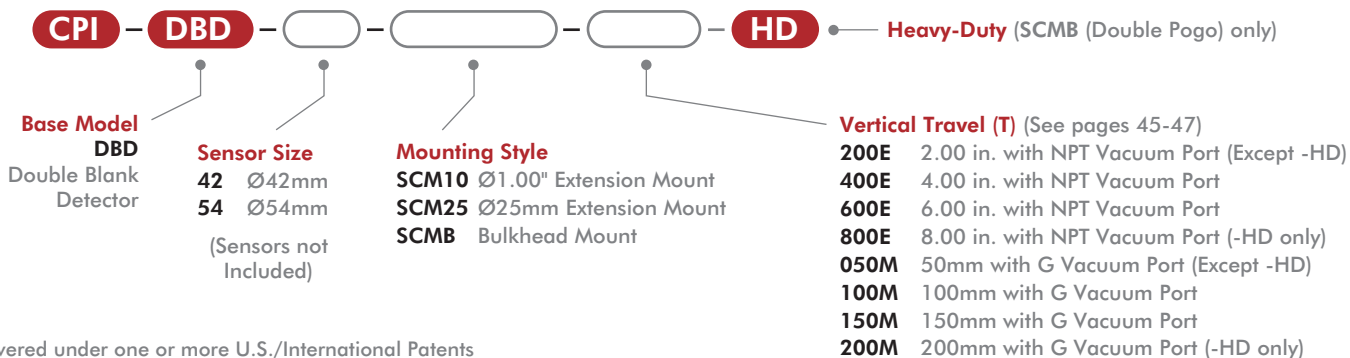
CPI-DBD-(X)-SCMB-(T)
Ø1.25" Thru Hole
Bulkhead Mount



CPI-DBD-(X)-SCM10/25-(T)
Ø1.00"/25mm
Extension Mount



CPI-DBD-(X)-SCMB-(T)-HD
Ø1.00"/25mm Tube Mount
Heavy-duty (Double Pogo)



Covered under one or more U.S./International Patents

CPI-DBD-(X)-(T)-SCMC-(D)
Ø1.50"/40mm
Tube Mount



X=Sensor Size
42 Ø42mm
54 Ø54mm
(Sensors not Included)

T=Vertical Travel
200E 2.00 in. with NPT Vacuum Port
400E 4.00 in. with NPT Vacuum Port
600E 6.00 in. with NPT Vacuum Port
050M 50mm with G Vacuum Port
100M 100mm with G Vacuum Port
150M 150mm with G Vacuum Port

D=Tube Mount
40 40mm Tube Mount (Metric Only)
150 1.50" Tube Mount (Imperial Only)
(See page 47)

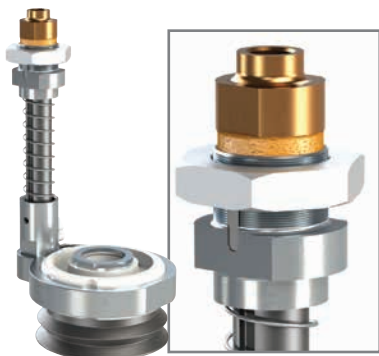
CPI-DBD-42-200E-SCMS
Ø45mm
BodyBuilder Mount
(See page 48)



DESTACKER DOUBLE BLANK DETECTOR SPRING MOUNTS

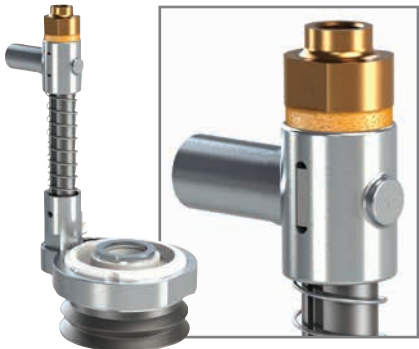
Vacuum Products | Dimensions | Technical Specifications

DBD Bulkhead/Extension Style Dimensions

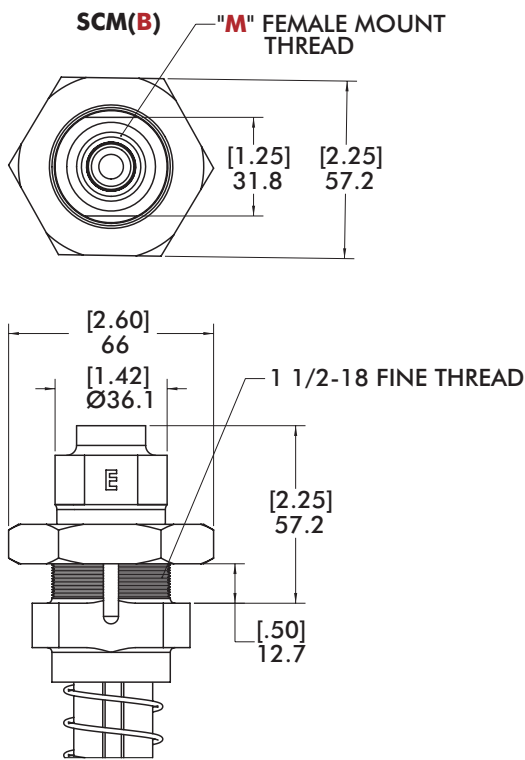


SCMB
Ø1.25" Thru Hole
Bulkhead Mount

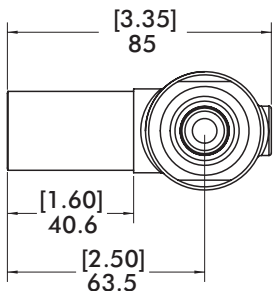
Note: To be used in vertical orientations only.



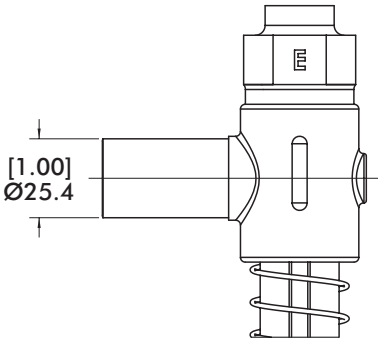
SCM10/25
Ø1.00"/25mm
Extension Mount



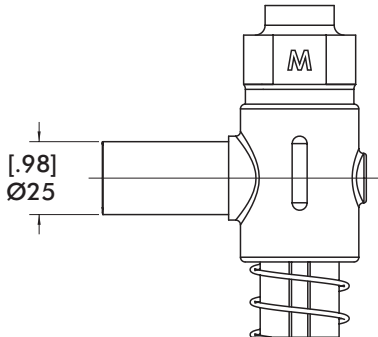
SCM(10) & SCM(25)



SCM(10) (ENGLISH)



SCM(25) (METRIC)

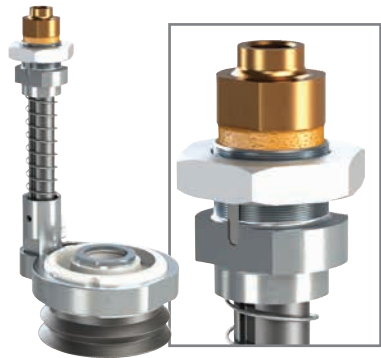


Version	(M)
Imperial	3/8" NPT
Metric	3/8" G

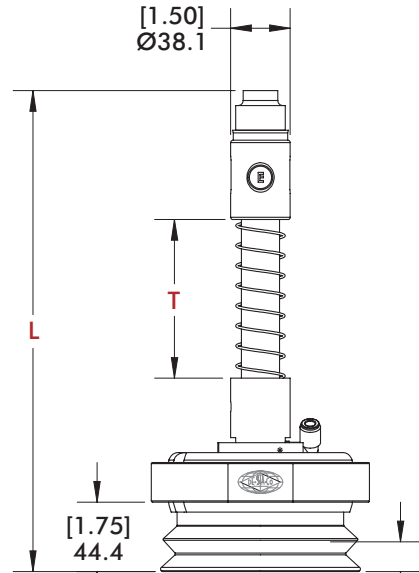
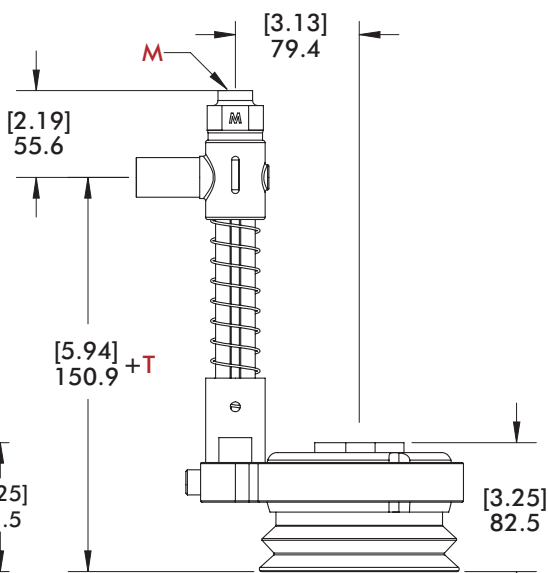
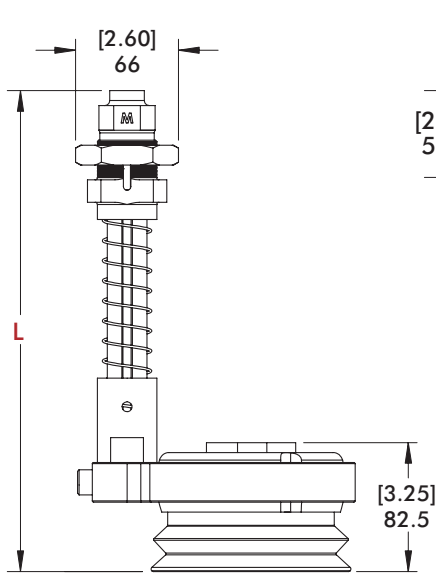
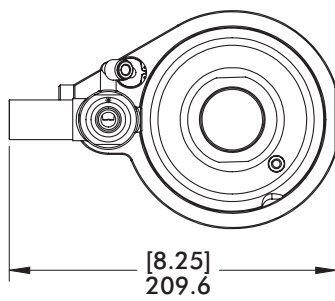
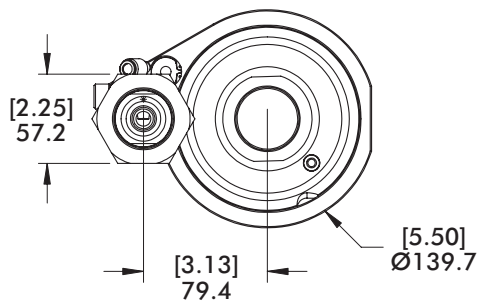
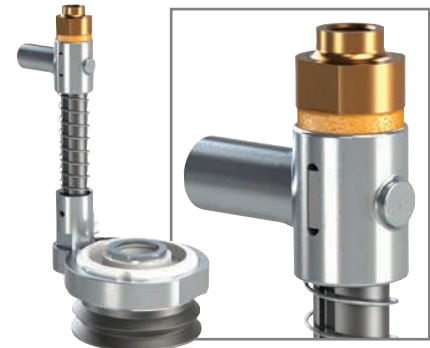
DESTACKER DOUBLE BLANK DETECTOR SPRING MOUNTS

Vacuum Products | Dimensions | Technical Specifications

DBD Bulkhead/Extension Style



Note: To be used in vertical orientations only.



DBD Travel and Length - CPI-DBD-(X)-SCM(X)-(T)

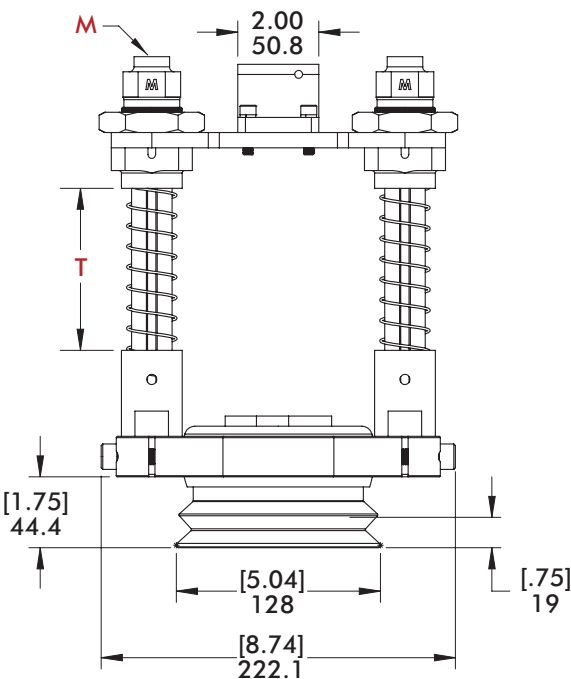
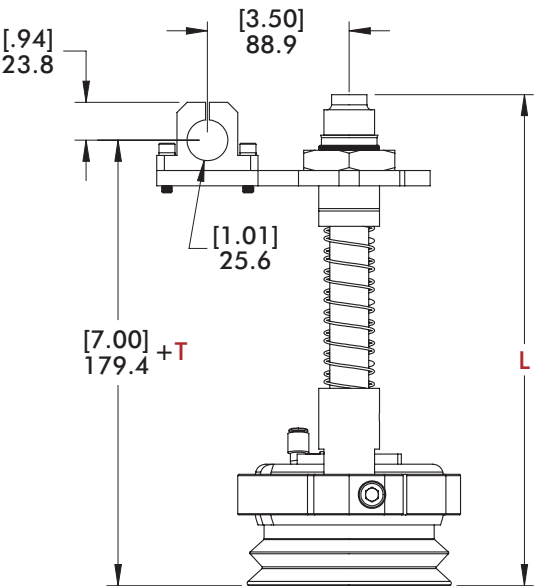
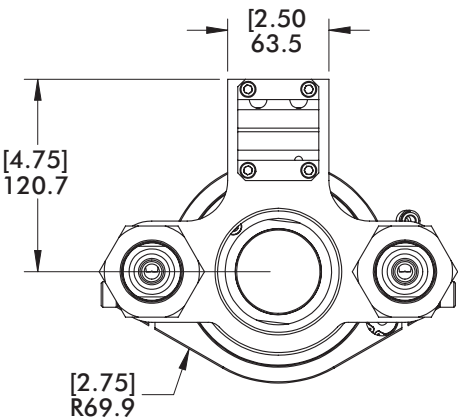
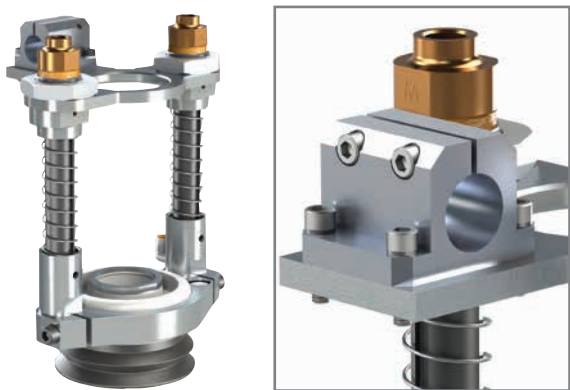
Version	Vertical Travel (T)	(L)	(M)	Weight
Imperial	200E (2.00")	257.1 [10.12]	3/8" NPT	.85kg [1.87 lb]
	400E (4.00")	307.9 [12.12]		.90kg [1.97 lb]
	600E (6.00")	358.7 [14.12]		.94kg [2.08 lb]
Metric	050M (50mm)	257.1 [10.12]	3/8" G	.85kg [1.87 lb]
	100M (100mm)	307.9 [12.12]		.90kg [1.97 lb]
	150M (150mm)	358.7 [14.12]		.94kg [2.08 lb]

DESTACKER DOUBLE BLANK DETECTOR SPRING MOUNTS



Vacuum Products | Dimensions | Technical Specifications

DBD Heavy Duty (Double Pogo)

Note: To be used in vertical orientations only.



DBD Travel and Length - CPI-DBD-(X)-SCMB-(T)-HD

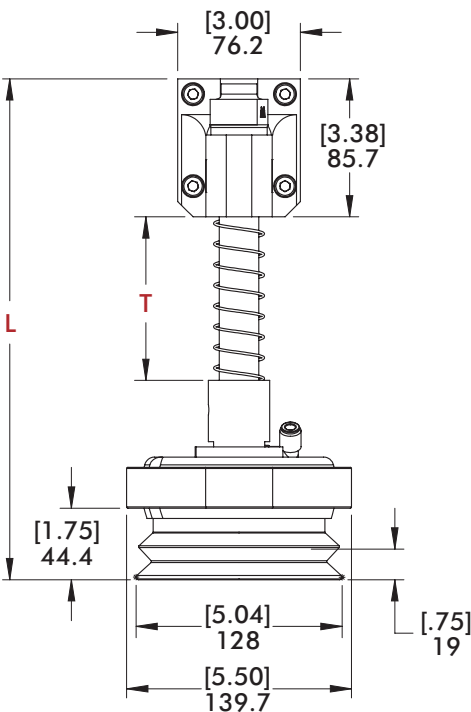
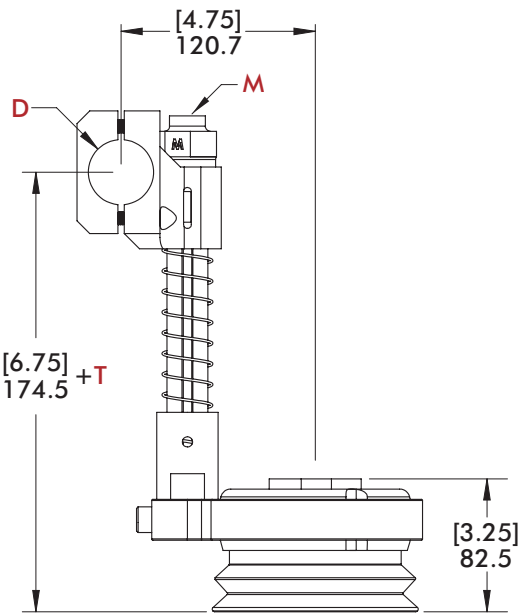
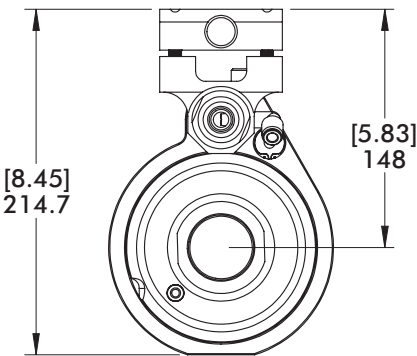
Version	Vertical Travel (T)	(L)	(M)	Weight
 Imperial	400E (4.00")	307.9 [12.12]	3/8" NPT	3.06kg [6.75 lb]
	600E (6.00")	357.9 [14.09]		3.16kg [6.97 lb]
	800E (8.00")	405.9 [15.98]		3.23kg [7.12 lb]
 Metric	100M (100mm)	307.9 [12.12]	3/8" G	3.06kg [6.75 lb]
	150M (150mm)	357.9 [14.09]		3.16kg [6.97 lb]
	200M (200mm)	405.9 [15.98]		3.23kg [7.12 lb]

BODYBUILDER™ DOUBLE BLANK DETECTOR SPRING MOUNTS

Vacuum Products | Dimensions | Technical Specifications



DBD Ø1.50"/40mm Tube Mount

Note: To be used in vertical orientations only.



X=Sensor Size
42 Ø42mm
54 Ø54mm
(Sensors not Included)

DBD Travel and Length - CPI-DBD-(X)-(T)-SCMC-(D)

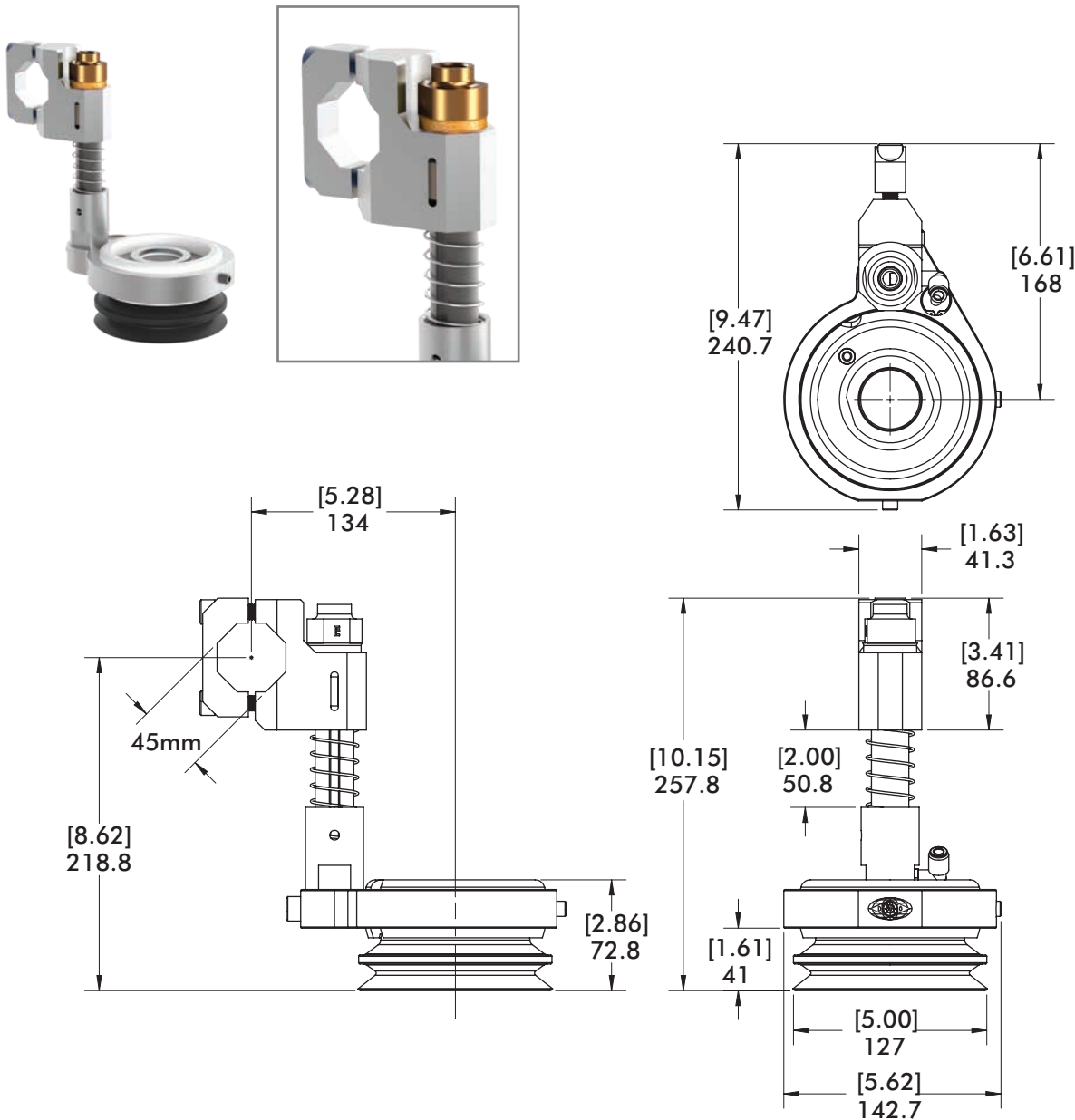
Version	Vertical Travel (T)	(L)	(M)	(D)	Weight
 Imperial	200E (2.00")	261.1 [10.28]	3/8" NPT	150 (Ø1.50")	.85kg [1.87 lb]
	400E (4.00")	311.1 [12.25]			.90kg [1.97 lb]
	600E (6.00")	369.9 [14.21]			.94kg [2.08 lb]
 Metric	050M (50mm)	261.1 [10.28]	3/8" G	40M (Ø40mm)	.85kg [1.87 lb]
	100M (100mm)	311.1 [12.25]			.90kg [1.97 lb]
	150M (150mm)	369.9 [14.21]			.94kg [2.08 lb]

DESTACKER DOUBLE BLANK DETECTOR SPRING MOUNTS


Vacuum Products | Dimensions | Technical Specifications

DBD Ø45mm BodyBuilder Mount

Note: To be used in vertical orientations only.



CPI-DBD-42-200E-SCMS-45B

Version	Thread	Weight
Imperial		
	3/8" NPT	1.8kg [3.9 lb]